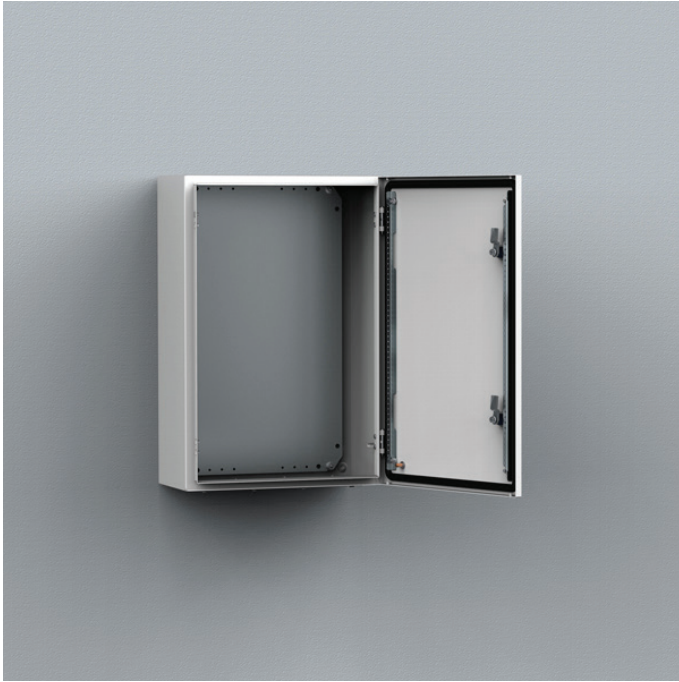


# MAS0403021PER5

MILD STEEL, SINGLE DOOR ENCLOSURE



The mild steel single door wall mounted enclosure range, MAS, with a IP 66 protection degree, is available off the shelf in many different sizes. This enclosure range is well suited for many different applications. The risk for component failure, and with that unnecessary downtime, is eliminated as water and dust are prevented from entering the enclosure.



IP 66 | TYPE 4, 12, 13 | IK 10

## Without mounting plate

H	400
W	300
D	210
Size	210 x 96
Type	1
Openings	1
N° of locks	1
Weight (kg)	6.20
Item no.	MAS0403021PER5

**Material:** Body: 1.2 mm mild steel for enclosures with a depth of 155 mm / 1.4 mm for enclosures with a depth of 210 or 260 mm / 1.5 mm for enclosures with a depth of 300 or 400 mm, or if a height or width is 1000 mm or greater.

**Body:** Folded and seam welded. Four 8.5 mm diameter holes for wall fixing, pressed out in 20.4 mm diameter x 2 mm depressions to allow air circulation around the rear part of the enclosure.

**Door:** Surface mounted with 130° opening. Concealed removable hinges with captive pin. Hinges can be mounted to allow left or right hand opening. There are studs to mount door profiles MMDP included as standard. Sealing is ensured by an injected one piece polyurethane gasket.

**Lock:** Customized lock with double-bit for easy opening of the door. Double-bit 3 mm insert and 90° movement. 1000 mm high enclosures and above have espagnolette three point locking. Other inserts are available as an accessory.

**Mounting plate:** The mounting plate is marked vertically at 10 mm intervals for easy horizontal positioning of equipment. On the top and bottom there are holes to facilitate cable fixing. Fixed onto M8 press welded studs to the rear of the enclosure. All sides from 800 mm and above are strengthened by folded edges. By using the AMG accessory the mounting plate position can be adjusted to any depth.

**Gland Plate Opening:** Situated at the far rear of the enclosure to make cabling onto the mounting plate easier.

**Protection:** Complies with IP 66 | TYPE 4, 12, 13 | IK 10. For outdoor installation the use of a rain hood ARF and 100% polyester paint coating is recommended. The corrosion resistance must be taken into consideration.

**Approvals:** CE, CSA, DNV-GL, GOST, Kema Keur - DEKRA, Lloyd's Register, RS, cULus\_UL Listed.

**Finish:** RAL 7035 structured powder coating.

**Delivery:** Enclosure with door and two door mounting profiles, from size MAS0604015R5 and above. Gland plate(s) with gasket(s), plastic double-bit 3 mm key, and mounting accessories. MAS1006026R5 and above, come with a metallic key. Earthing facilities.