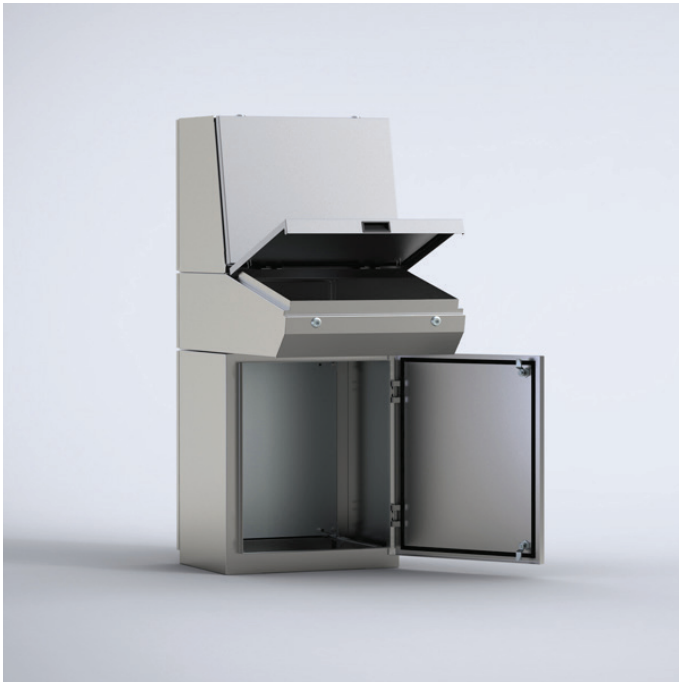


MPCS161-316

CONSOLE SYSTEM, STAINLESS STEEL



This stainless steel combinable console system, MPCS, has a IP 55/56 protection degree. It includes three interchangeable sections, top, desk and bottom. The system is very flexible and the various possible combinations can meet many design requirements. The ergonomic design of the top and desk units allows for easy installation and access to HMI-equipment, plus increases the mounting space available. This console can be installed in virtually any environment, grade dependent.



IP 66 | TYPE 4X, 12, 13 | IK 10 (single door); IP 55 | TYPE

Top section units |Stainless steel

H	500
W	1600
D	494
Weight (kg)	56.67
Item no.	MPCS161-316*

Material: AISI 304 pre-grained stainless steel / AISI 316L (on request). Body and door: 2 mm. Rear panel: 1.5 mm. Bottom plates: 1.5 mm. Mounting plate: 2.5 mm galvanized steel.

Body: Folded and seam welded. Console construction counts with a base that provides a distance between the floor and the lower part of the door/s acting as an integrated plinth.

Doors and panels: Single folded surface mounted with hinges allowing left and right-hand opening to base door. Top section and desk panels held open by self engage/self release mechanical panel stays. Concealed hinges allowing 90° opening on the desk. Double doors on 1200 mm and 1600 mm wide base units.

Mounting plate: Standard in base unit. Fixed by fixing brackets on C rail, top and bottom for depth adjustment. Optional in desk and top section units.

Lock: Double-bit 3 mm locks for top section and desk unit. For base, two double-bit 3 mm locks. Other options available. See wall mounting section.

Cable access: Bottom open in base unit for cable access. Bottom plates for cable glanding supplied as standard.

Earthing: M8 threaded studs on bodies, doors and rear panels.

Finish: 240s pre grained stainless steel (average 0.5 micron).

Protection: Single door: IP 66 | TYPE 4X, 12, 13 | IK 10. Double door: IP 55 | TYPE 12, 13 | IK 10.

Approvals: CE, CSA, GOST, Kema Keur - DEKRA, Lloyd's Register, cULus_UL Listed.

Delivery: The base unit is provided with a mounting plate as standard. Desk and top section units have mounting plates provided as accessories. All top and base apertures can be closed by choosing the appropriate accessory plate. Suitable nuts and washers for the various earthing studs are provided.