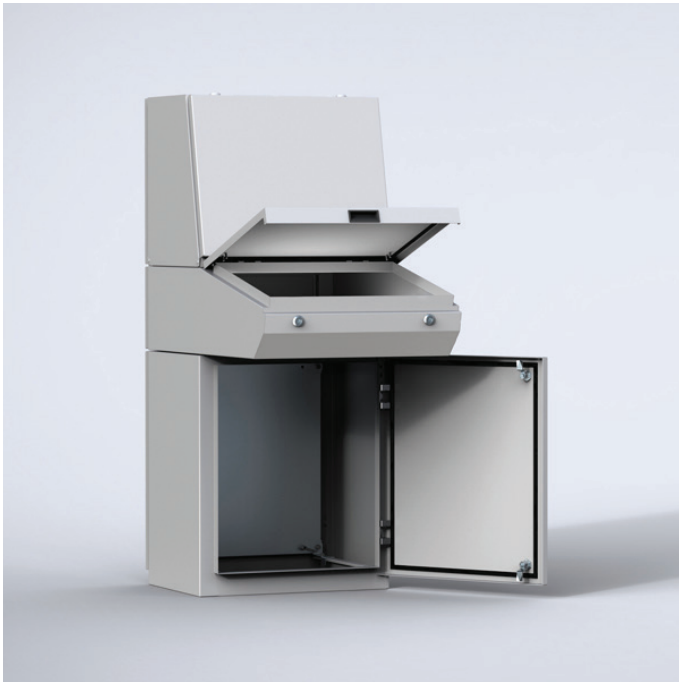


# MPC123R5

CONSOLE SYSTEM



This mild steel combinable console system, MPC, has a IP 55/56 protection degree. It includes three interchangeable sections, top, desk and bottom. The system is very flexible and the various possible combinations can meet many design requirements. The ergonomic design of the top and desk units allows for easy installation and access to HMI-equipment, and increases the mounting space available. Stainless steel panels may be used as an alternative for some parts of the console, should it be exposed to chemical agents, etc.



IP 66 | TYPE 4, 12, 13 | IK 10 (single door); IP 55 | TYPE

## Base units with mounting plate |Mild steel

H	700
W	1200
D	500
h	590
w	1099
d	470.5
Usable depth	470.5
Weight (kg)	69.00
Item no.	MPC123R5

**Material:** Body and door: 1.5 mm mild steel. Rear panel: 1.5 mm mild steel. Bottom plates: 1.2 mm galvanized steel. Mounting plate: 2.5 mm galvanized steel.

**Body:** Folded and seam welded. Console construction counts with a base that provides a distance between the floor and the lower part of the door/s acting as an integrated plinth.

**Doors and panels:** Single folded surface mounted with hinges allowing left and right-hand opening to base door. Top section and desk panels held open by self engage/self release mechanical panel stays. Concealed hinges allowing 90° opening on the desk. Double door on 1200 and 1600 mm wide base units.

**Mounting plate:** Standard mounting plate in base unit. Fixed by fixing brackets on C rail, top and bottom for depth adjustment. Optional in desk and top section units.

**Lock:** Double-bit 3 mm locks for top section and desk unit. For base, two double-bit 3 mm locks. Other options available. See wall mounting section.

**Cable access:** Bottom opening in base unit for cable access. Bottom plates for cable glanding supplied as standard.

**Earthing:** M8 threaded studs on bodies, doors and rear panels.

**Finish:** RAL 7035 structured powder coating.

**Protection:** Single door: IP 66 | TYPE 4, 12, 13 | IK 10.

**Double door:** IP 55 | TYPE 12, 13 | IK 10.

**Approvals:** CE, CSA, GOST, Kema Keur - DEKRA, Lloyd's Register, cULus\_UL Listed.

**Delivery:** The base unit is provided with a mounting plate as standard. Desk and top section units have mounting plates provided as accessories. All top and base openings can be closed by choosing the appropriate accessory plate. Suitable nuts and washers for the various earthing studs are provided.