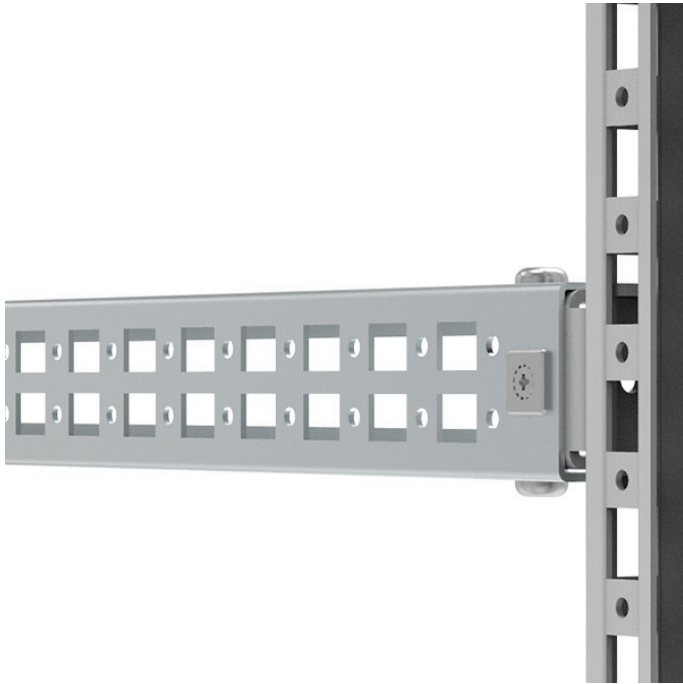


# CLPF1000

Mounting profiles | Power Distribution



9b

H/W	1000
W/D	1000
Max. loading Horizontal C	800 N
Item no.	CLPF1000
Max. loading Horizontal	1000 N

**Description:** The CLPF profile system is a 40 mm wide and 25 mm high profile, which can be mounted in all directions on the enclosure's frame. It can also be used in combination with the CLPK and the VB profiles. By turning the profile it can be used as a standard CP20/40 profile in combination with GLM 40/6 sliding nut, to mount installation material which needs adjusting in depth. The profiles, when mounted onto the enclosure's frame are flush with the enclosure's profiles. Two rows of hole patterns for cage nut fixing and self tapping screws are provided. For 90 mm wide profiles two profiles can be mounted next to each other.

**Material:** Zinc plated steel.

**Pack quantity:** 4 profiles including snap-line for fixing.

The mounting profiles can be fixed in all directions, providing full flexibility for the mounting of accessories, components, and other equipment.