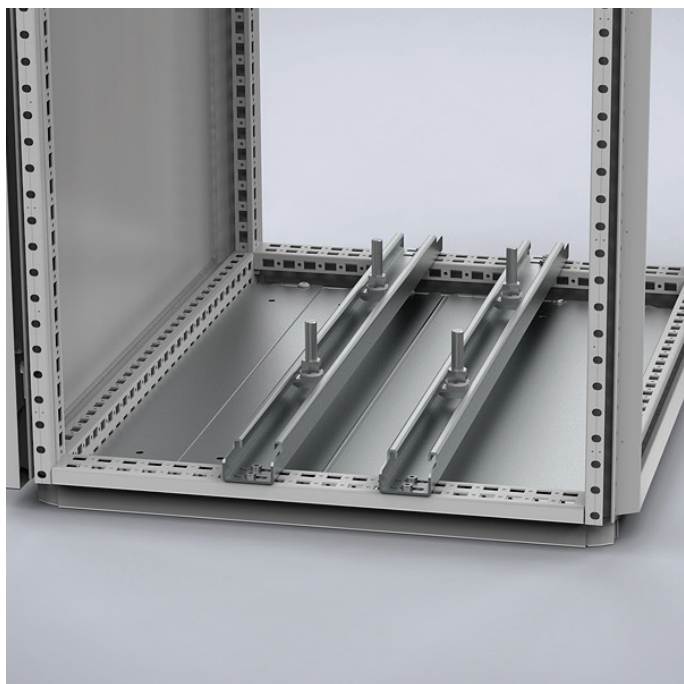


# CBU1200

Heavy duty carrier bars



W/D	1200
Max. loading	1500 N
Item no.	CBU1200

**Description:** Heavy duty carrier bar for mounting heavy components e.g. transformers. Supplied with T-shaped sliding bolts and equipped with slotted holes for mounting in any position, both in width and depth of the enclosure.

**Material:** 2.5 mm zinc plated steel.

**Pack quantity:** 1 pair with mounting accessories and 4 T-shaped sliding bolts.

This heavy duty carrier bar for mounting heavy components, such as transformers, is supplied with T-shaped sliding bolts and is equipped with slotted holes for mounting in any position within the enclosure.