

ENSTO

PRODUCT SPECIFICATION

5/4/2021

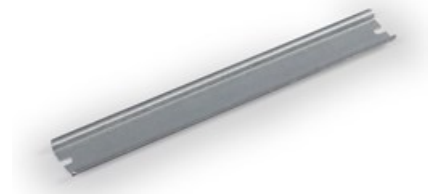


6438100113155

DIN rail

DR35550.5

Code DR35550.5
 GTIN 6438100113155
 Name DIN rail Ensto Cubo O
 For 600 mm side, width 35 mm, DIN
 46277/3
 Description Accessory for Ensto Cubo O and C
 thermoplastic enclosures and Ensto Cubo
 P panel building system
 Vendor Ensto Building Systems Finland Oy



Technical specification

Dimensions

Length: 7.3 mm
 Width: 35 mm
 Height: 560 mm
 Size: 35 x 560
 Weight: 0.239 kg

Material

Material: Galvanized steel

Others

ETIM Class: EC001285

ETIM 7 Technical specification

etim

Model: DIN rail (top hat rail) 35/7.5 mm
 Material: Steel
 Surface finishing: Galvanized
 Punch shape: Long-slot
 Drill hole distance centrally: 540 mm
 Material thickness: 1 mm

Length:	550 mm
Height:	35 mm

Packaging

Default package

Unit:	PCE
Package size:	10
Depth:	30 mm
Width:	80 mm
Height:	600 mm
Weight:	2.39 kg
Volume:	1.44 l