

# ENSTO

**PRODUCT SPECIFICATION**

5/4/2021



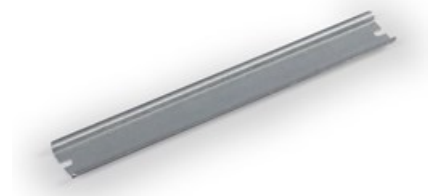
6418677164767

DIN rail

DR35350.5

---

Code	DR35350.5
GTIN	6418677164767
Name	DIN rail Ensto Cubo O For 400 mm side, width 35 mm, DIN 46277/3
Description	Accessory for Ensto Cubo O and C thermoplastic enclosures and Ensto Cubo P panel building system
Vendor	Ensto Building Systems Finland Oy



## Technical specification

---

### Dimensions

Length:	360 mm
Width:	35 mm
Height:	7.5 mm
Volume :	9.2 cm <sup>3</sup>
Size:	35 x 360
Weight:	0.115 kg

### Material

Material:	Galvanized steel
-----------	------------------

### Others

ETIM Class:	EC001285
-------------	----------

## ETIM 7 Technical specification

---

### etim

Model:	DIN rail (top hat rail) 35/7.5 mm
Material:	Steel
Surface finishing:	Galvanized
Punch shape:	Long-slot
Drill hole distance centrally:	350 mm

Material thickness:	1 mm
Length:	360 mm
Height:	7.5 mm

## Packaging

---

### Default package

Unit:	PCE
Package size:	10
Depth:	30 mm
Width:	80 mm
Height:	400 mm
Weight:	1.15 kg
Volume:	0.96 l