

ENSTO

PRODUCT SPECIFICATION

5/4/2021

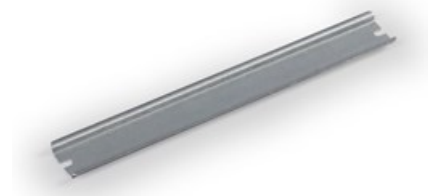


6418677164750

DIN rail

DR35250.5

Code	DR35250.5
GTIN	6418677164750
Name	DIN rail Ensto Cubo O For 300 mm side, width 35 mm, DIN 46277/3
Description	Accessory for Ensto Cubo O and C thermoplastic enclosures and Ensto Cubo P panel building system
Vendor	Ensto Building Systems Finland Oy



Technical specification

Dimensions

Length:	260 mm
Width:	35 mm
Height:	7.5 mm
Volume :	6.64 cm ³
Size:	35 x 260
Weight:	0.083 kg

Material

Material:	Galvanized steel
-----------	------------------

Others

ETIM Class:	EC001285
-------------	----------

ETIM 7 Technical specification

etim

Model:	DIN rail (top hat rail) 35/7.5 mm
Material:	Steel
Surface finishing:	Galvanized
Punch shape:	Long-slot
Drill hole distance centrally:	250 mm

Material thickness:	1 mm
Length:	260 mm
Height:	7.5 mm

Packaging

Default package

Unit:	PCE
Package size:	10
Depth:	30 mm
Width:	80 mm
Height:	300 mm
Weight:	0.83 kg
Volume:	0.72 l