

ENSTO

PRODUCT SPECIFICATION

5/3/2021

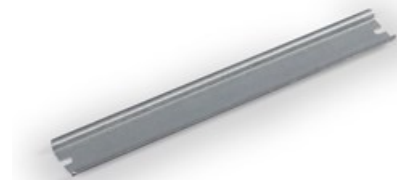


6418677164743

DIN rail

DR35150.5

Code	DR35150.5
GTIN	6418677164743
Name	DIN rail Ensto Cubo O For 200 mm side, width 35 mm, DIN 46277/3
Description	Accessory for Ensto Cubo O and C thermoplastic enclosures
Vendor	Ensto Building Systems Finland Oy



Technical specification

Dimensions

Length:	160 mm
Width:	35 mm
Height:	7.5 mm
Volume :	4.09 cm ³
Size:	35 x 160
Weight:	0.051 kg

Material

Material:	Galvanized steel
-----------	------------------

Others

ETIM Class:	EC001285
-------------	----------

ETIM 7 Technical specification

etim

Model:	DIN rail (top hat rail) 35/7.5 mm
Material:	Steel
Surface finishing:	Galvanized
Punch shape:	Long-slot
Drill hole distance centrally:	150 mm
Material thickness:	1 mm

Length:	160 mm
Height:	7.5 mm

Packaging

Default package

Unit:	PCE
Package size:	10
Depth:	30 mm
Width:	230 mm
Height:	150 mm
Weight:	0.51 kg
Volume:	1.035 l